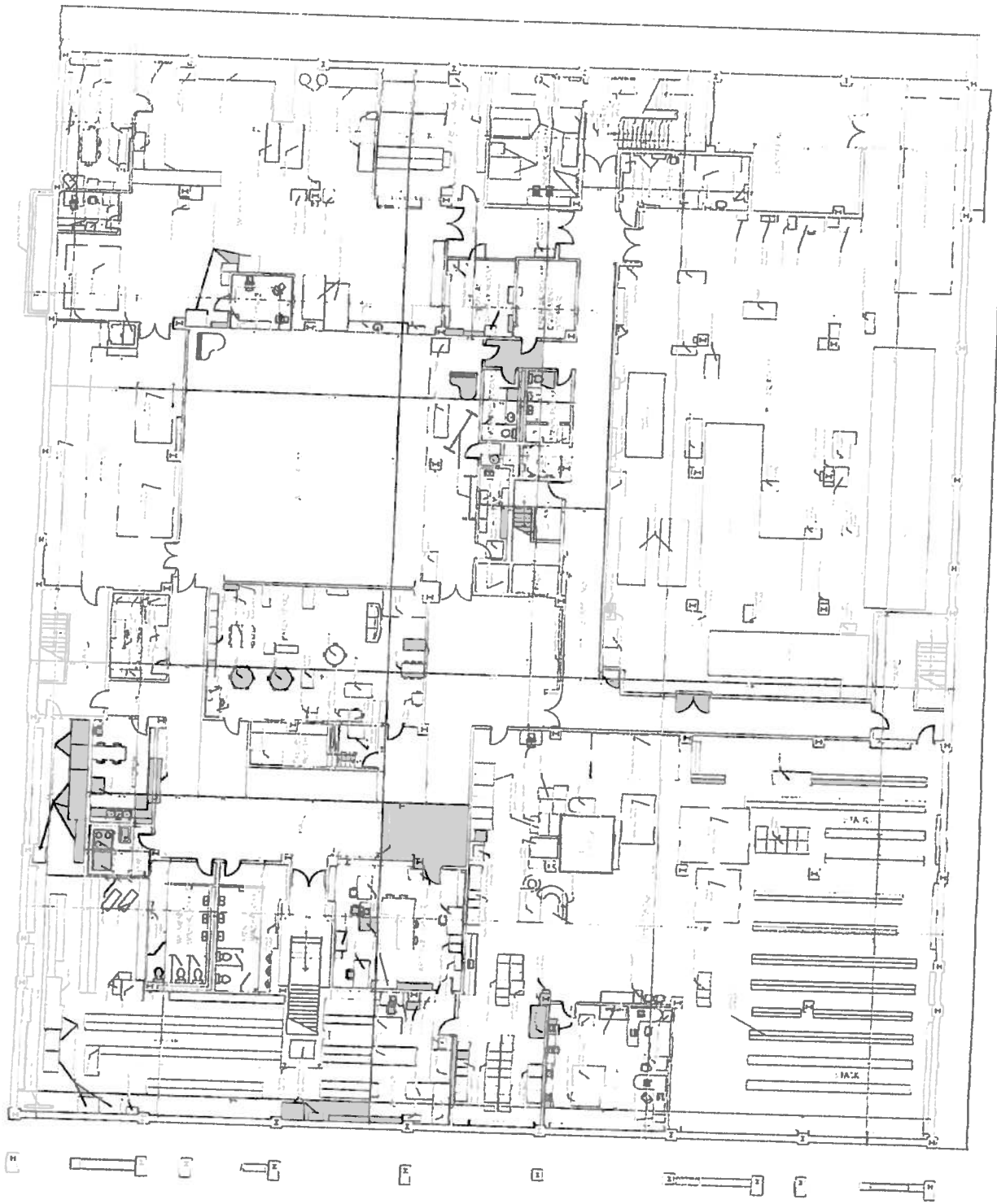


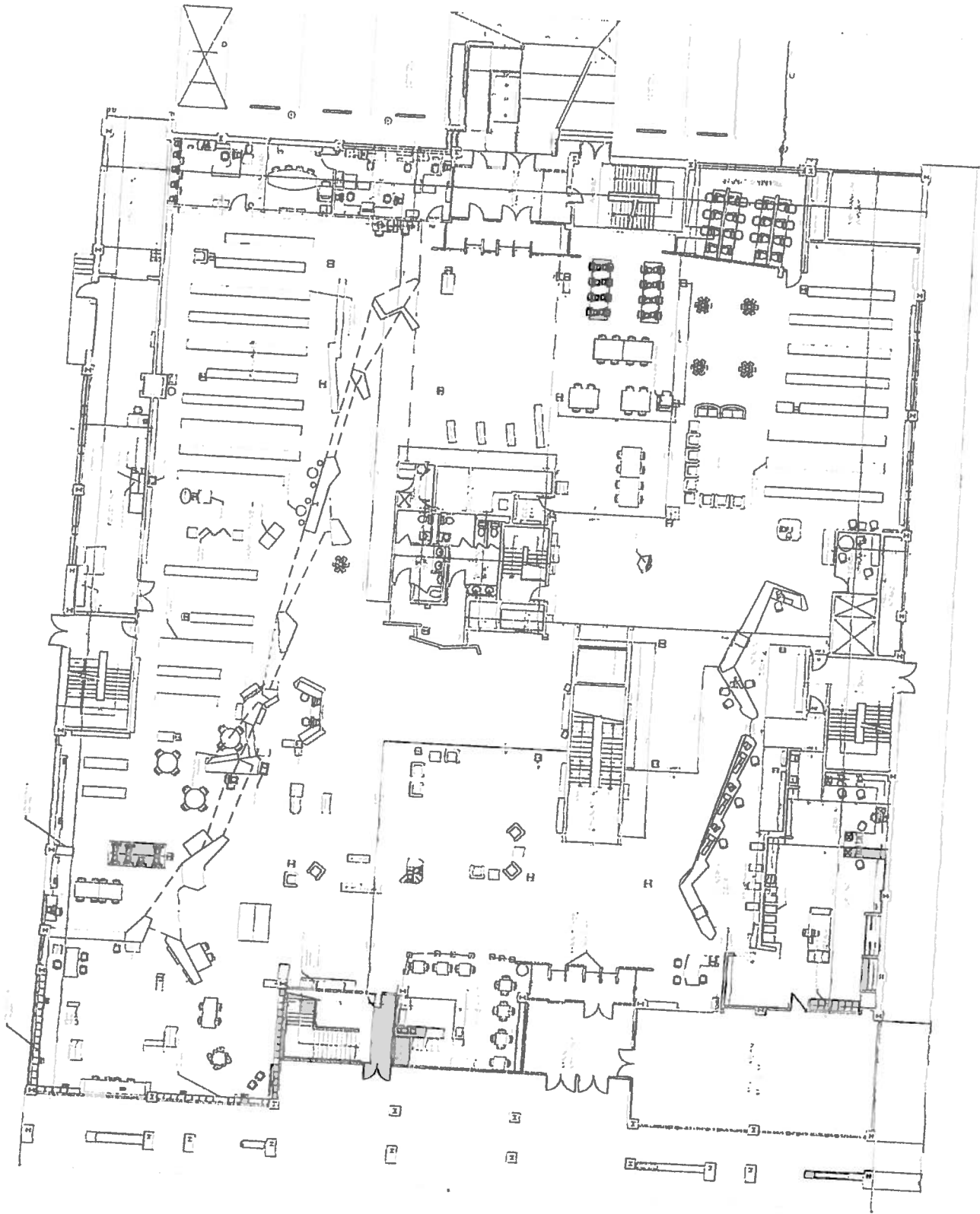
## Central Public Library

The following is a break down of the square footage used at Central Public Library (all floors combined) for formal and public meeting rooms, archives, mechanical and janitorial, staff work areas, shelving units used for books (including clearances for walkways), public computers, training rooms, loading dock, and rented spaces. These totals are also compared to the total interior square footage of the building as a percent. These values were determined from the library's layout during July 2011.

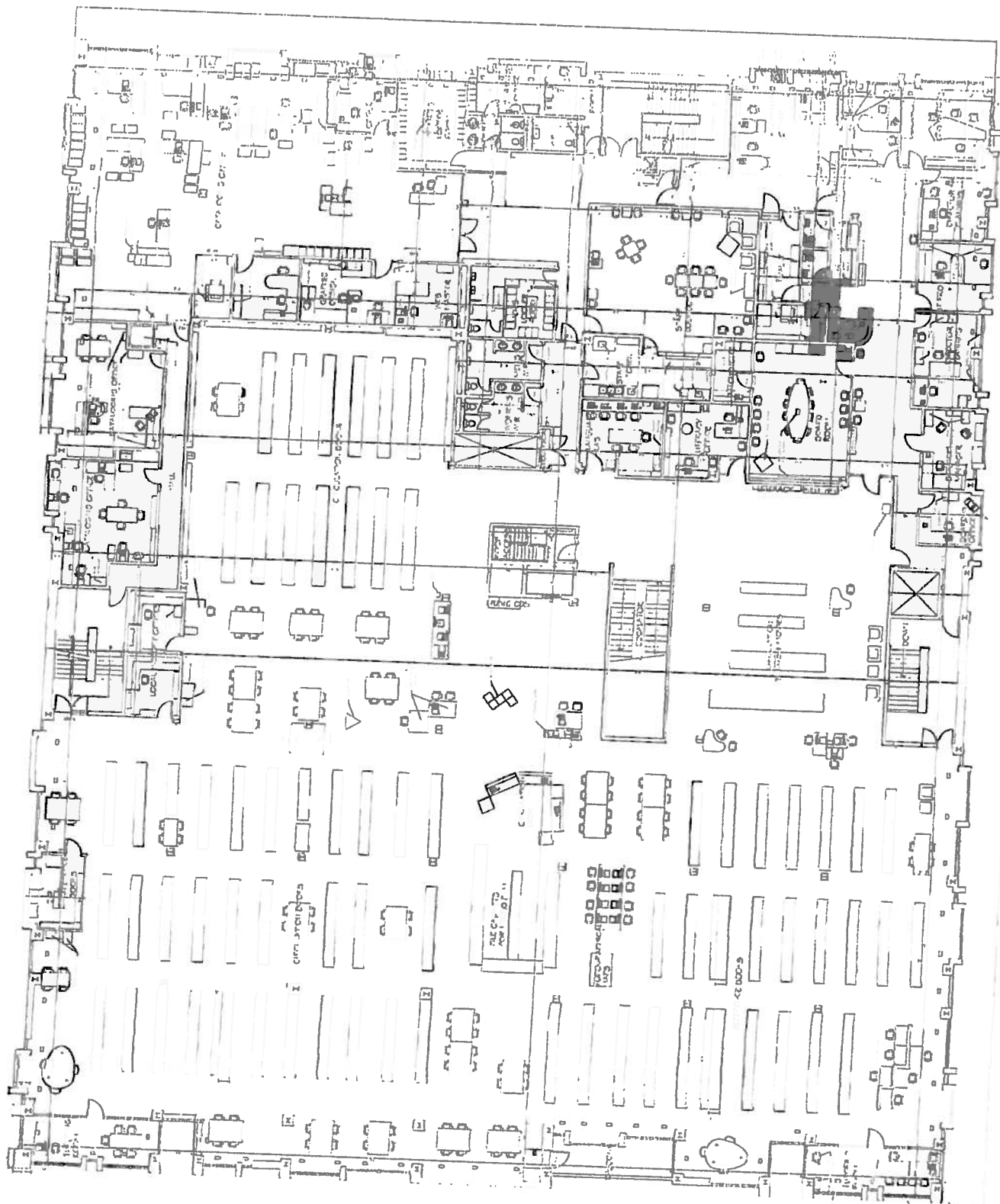
Type of Area	Area (Sq. ft.)	Percent of Total Interior Square Footage
<b>Total usable interior space</b>	<b>96912</b>	<b>100%</b>
Formal Meeting Rooms	2815	2.9%
Public Meeting Rooms	3620	3.7%
Public Computers	820	0.8%
Training Rooms	1290	1.3%
Loading Dock	1280	1.3%
Rented by Café	550	0.6%
Rented by Early Years	1515	1.6%
Rented by Wood Carving Museum	1150	1.2%
Staff Work Area	13450	13.9%
Bookshelves (including walkways around them)	19400	20.0%
Archives	2660	2.7%
Mechanical And Janitorial	12235	12.6%



CENTRAL BASEMENT FLOOR PLAN



CENTRAL FIRST FLOOR PLAN



CENTRAL SECOND FLOOR PLAN